



# Make you own 'Fiddle' Toy



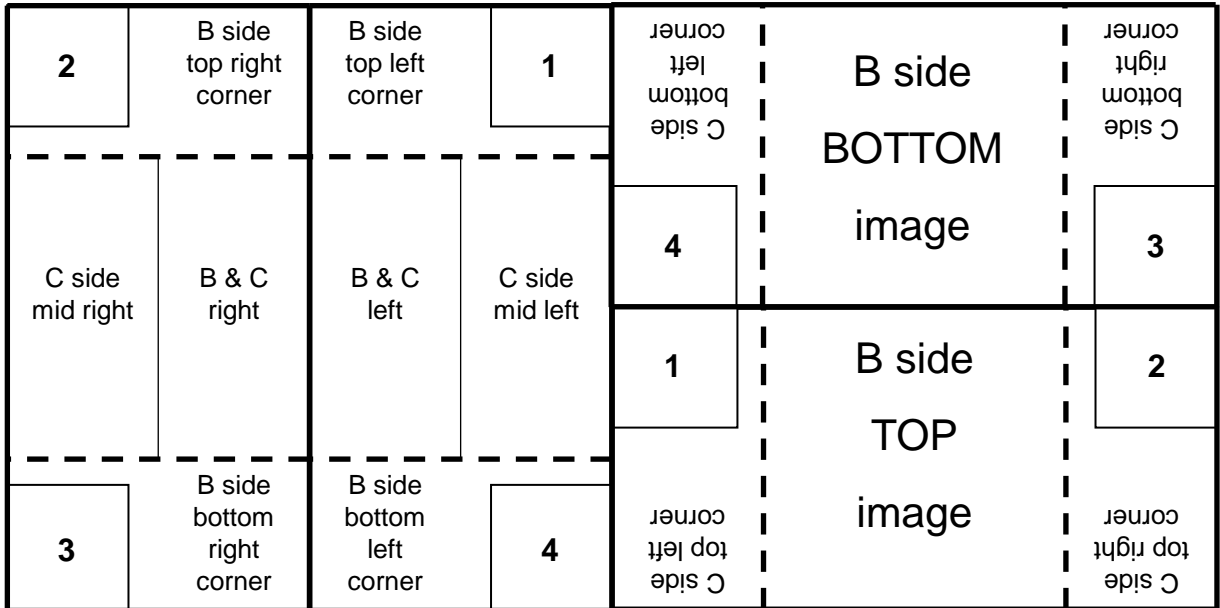
*For overactive minds and restless hands*

Instructions:

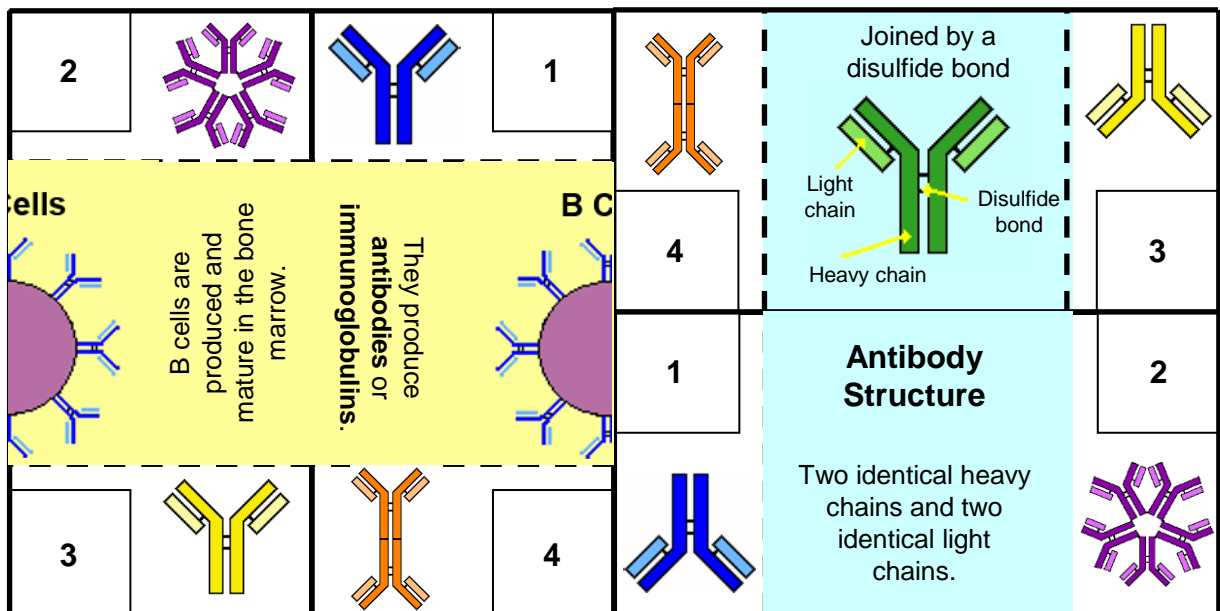
1. Starting with puzzle 1, cut out the four large rectangle boxes.
2. Fold each rectangle along the two 2 dashed lines, then unfold them leaving a creased line.
3. Place the two blue rectangles together, making a square, so that the numbered corners are arranged from 1-4 clockwise. Next dab glue onto each numbered corner, 1-4.
4. Place the two yellow rectangles face down on top of the blue rectangles, so the corresponding numbers match. You should now have a square, with only the four outer corners glued.

*Your toy is complete and ready for you to fiddle with whenever your hands get that fiddly feeling!*

## The set up 1 -



## Example 2 -



## The set up 1

<p>D side</p> <p>Put your text or picture here this way up</p>	<p>A side</p> <p>Put your text or picture here this way up</p>
--	--

## An example 2

<p><b>The consequence of a Genetic Disease</b></p> <p>X-linked agammaglobulinemia (XLA) is a rare X-linked genetic disorder where patients do not generate mature B cells. B cells are part of the immune system and that defends the body from infections. Without this normal immune response, patients with untreated XLA are prone to develop serious and even fatal infections as their body's ability to fight infection has been affected</p>	<p><b>Antibodies</b></p> <p>Antibodies or Immunoglobulins identify and neutralize foreign objects (antigen), such as bacteria and viruses.</p> <p>Recognition of an antigen by an antibody tags it for attack by other parts of the immune system. Antibodies can also neutralize targets directly by, for example, binding to a part of a pathogen that it needs to cause an infection.</p>
--	--



# Make you own 'Fiddle' Toy



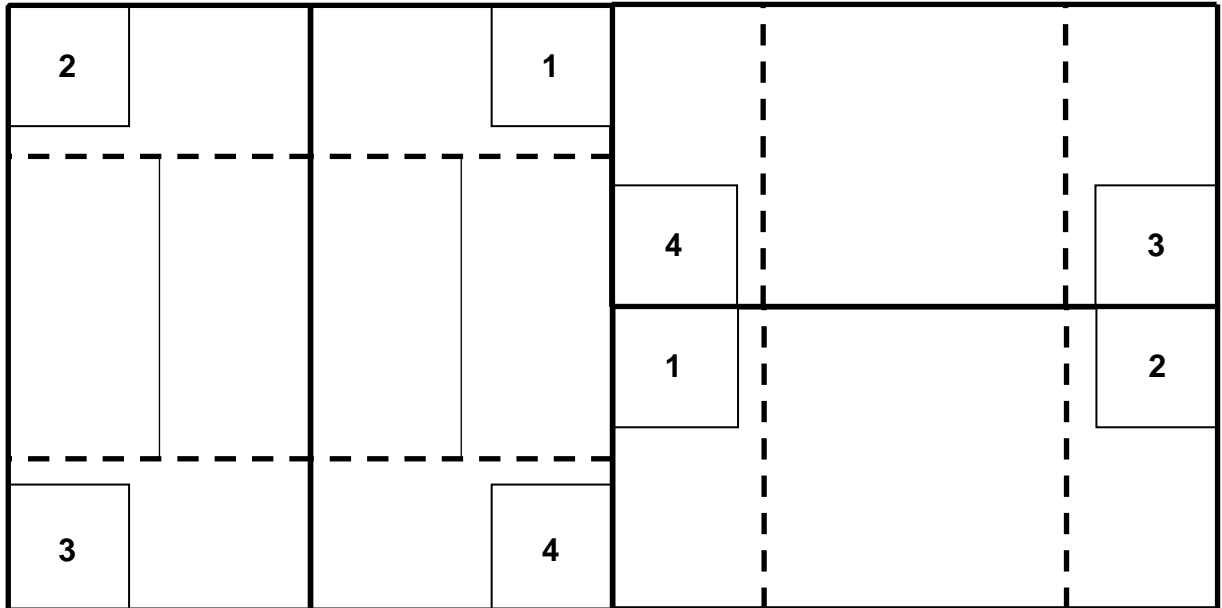
*For overactive minds and restless hands*

Instructions:

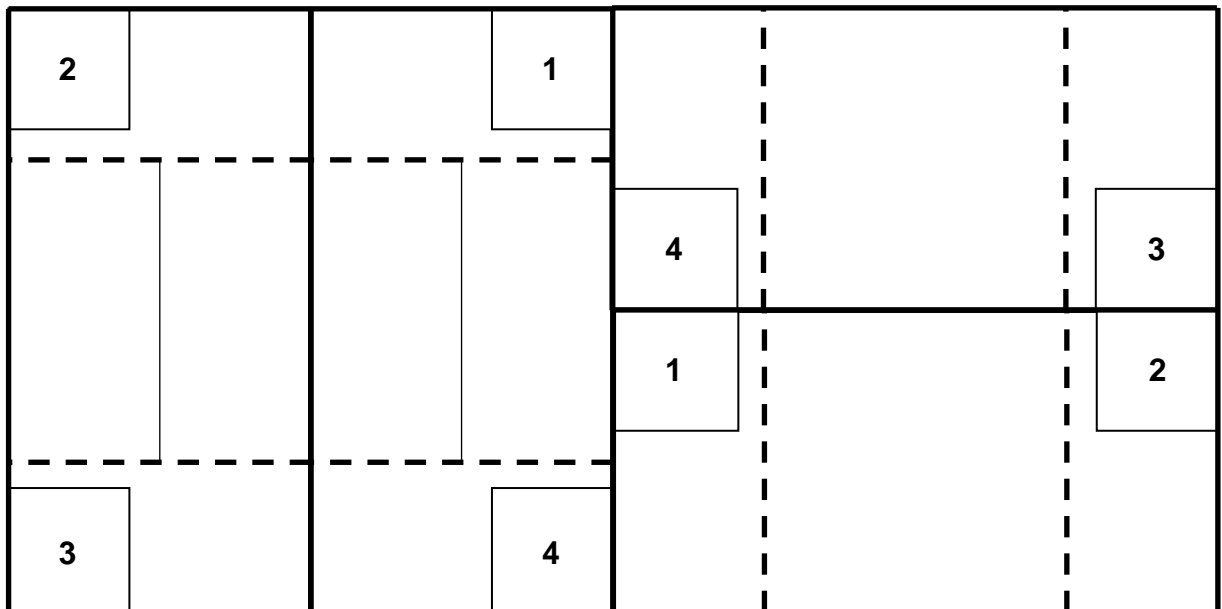
1. Starting with puzzle 1, cut out the four large rectangle boxes.
2. Fold each rectangle along the two 2 dashed lines, then unfold them leaving a creased line.
3. Place the two blue rectangles together, making a square, so that the numbered corners are arranged from 1-4 clockwise. Next dab glue onto each numbered corner, 1-4.
4. Place the two yellow rectangles face down on top of the blue rectangles, so the corresponding numbers match. You should now have a square, with only the four outer corners glued.

*Your toy is complete and ready for you to fiddle with whenever your hands get that fiddly feeling!*

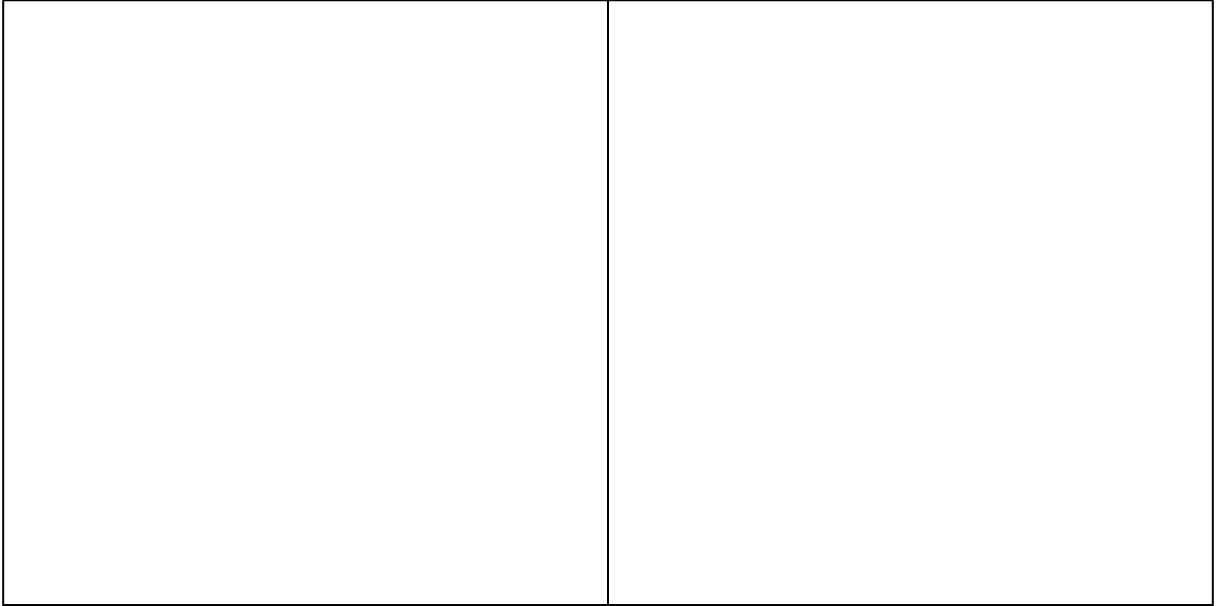
## Puzzle 1 -



## Puzzle 2 -



## Puzzle 1



## Puzzle 2

